

\$9,000,000 - 14801 Granada Drive, Corpus Christi

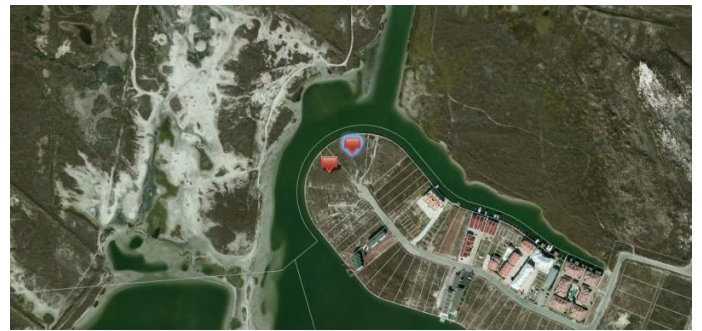
MLS® #237095

\$9,000,000

0 Bedroom, 0.00 Bathroom,
Land on 2.16 Acres

Padre Island Sec D, Corpus Christi, TX

1.08 acre FINGERTIP Canal lot, 275 feet of bulkhead, within minutes to Packery Channel & The Gulf Of Mexico. Great Investment Property, Zoned AT: Apartment-Tourist, High-Rise, Multiple-Family uses & Tourist Accommodations; density of 43.56 Units per acre. All utilities are available and ready for building. Within walking distance to Beaches, Restaurants. Within minutes to the Islands Charter Schools K-8, Schlitterbahn water park, the Golf Course, Churches, Parks, Medical Facilities, and so much more. Lot 25 available for sale as well.



Essential Information

MLS® #	237095
Price	\$9,000,000
Bathrooms	0.00
Acres	2.16
Type	Land
Status	Active

Community Information

Address	14801 Granada Drive
Subdivision	Padre Island Sec D
City	Corpus Christi
County	Nueces
State	TX
Zip Code	78418

Amenities

Utilities	Natural Gas Available, Sewer Available, Underground Utilities, Water Available
Is Waterfront	Yes
Waterfront	Canal Access, Seawall, Waterfront

Exterior

Lot Description	39x300x275x300
-----------------	----------------

School Information

District	Flour Bluff ISD
Elementary	Flour Bluff
Middle	Flour Bluff
High	Flour Bluff

Additional Information

Date Listed	June 25th, 2015
Days on Market	2281
HOA Fees	0.00

Listing Details

Listing Agent	Kim Erwin
Listing Office	KW Coastal Bend - Island

The information being provided by the Corpus Christi Association of REALTORS® is exclusively for consumers' personal, non-commercial use, and it may not be used for any purpose other than to identify prospective properties consumers may be interested in purchasing. The data is deemed reliable but is not guaranteed accurate by the MLS.
Listing information last updated on November 27th, 2021 at 12:03am CST